



Memoris



Memoris

[www.memoris.rs](http://www.memoris.rs)



# ABOUT US

If you ever considered making your own brand, first take a look at our offer. Our brand can easily become your brand. We are looking for distributors for every country, and we offer excellent terms.

The prices are the same as the ones offered by big manufacturers in China and Pakistan, with a crucial difference: we do not have minimum quantity. You can order and try, i.e. check our claims in any desired quantities. Each product has a guarantee. Top quality products with innovative and revolutionary solutions other brands do not offer even at higher prices. Extremely low prices for distributors allow the distributors to choose dumping prices in the market and promote or create normal market prices with enough remaining resources for marketing.

If you are a distributor and tired of low quality paired with acceptable prices, or unacceptable prices and high quality, Memoris brand is the right choice for you. Quality and price is our motto. If you are also tired of games dealing with representation and exclusive sales rights, and having to fight for your own rights with other people, again, Memoris brand is the right choice for you. We solve everything at once and turn oral agreements into binding contracts.

If you notice a resemblance between any of our products and products belonging to other brands, it is important to note that the two similar products are in no way identical. Our product is at least two times better. Our mission is to additionally improve the best selling products. Some of our products do combine the characteristics of several models of other brands, but each model is perfected by adding innovative and revolutionary solutions.

The process of developing and testing of our products involves scientists, doctors, professional and recreational athletes as well as buyers and distributors with great experience. Your suggestions are also welcome. Be a part of our sales and development team. If you, as a member of our team, ask for what we don't already have, we will make it for you specially.

Summing it up, our brand can simply be yours and you can have products at manufacturer's prices. We are a company with experience and contacts with factories equipped to meet the highest quality demands at reasonable prices. Our offer is actually a service between the manufacturer and traders who want the most for their money, including investment guarantee and protection. Our brand is protected everywhere in the world and distributors take over all the rights from the protection after the conclusion of the contract. Become a part of our team!

*Memoris team*





**MAGIC**

**FORCE**



**DOMINATE**



**WINNER**





**EVERY FEATURE IS DOUBLED IN MAKING THIS SHOE AND MORE THAN THAT, JUST TO SHOW PRESTIGE AND MAGIC. THE SILICON OUTSOLE IS REPLACED BY OUR REVOLUTIONARY INSOLE BUT THIS SHOE HAS BOTH THE INSOLE AND SILICONE OUTSOLE. THE PROTECTION NECESSARY FOR THE LAST SHOELACE HOLE IS PLACED ON ALL THE HOLES. OUTSOLE FOR EVERY KIND OF SURFACE, AND AN EXCELLENT UPPER FOR A COMPLETE CONTROL OVER THE BALL MAKE THIS SHOE UNIQUE AND PROBABLY THE BEST ON THE MARKET.**

The upper consists of four different materials: Garment PU (exclusive material for futsal shoes), Hiking (the lightest and the most durable material), Cow suede and Mesh. That combined together make an upper highly resistant to any external impacts, tearing and wearing while providing a great comfort and softness to the foot. This combination of materials and shape of the shoe ensure perfect ball control.

The tongue is fully mesh padded on the inside which ensures an excellent feel for the ball.

#### **MESH PADDED TONGUE**

Two additional reinforcements made from a high-quality rubber which strengthen the front part of the shoe most often exposed to ball impact and improve the kick itself.

#### **FRONT PART REINFORCEMENTS**

#### **UPPER**

Heel counter: a special material maintains the shape, improves stability and protects the heel.

#### **HEEL COUNTER**

Special, resistant type of rubber which prevents the damaging of eyelets.

#### **RUBBER PROTECTION**

Special reinforcement made from special durable cow suede added to increase the durability of the shoe on the medial side (arch side) usually exposed to the abrasion in movements of sliding.

#### **COW SUEDE PROTECTION**

The shoe is twice secured in the front area, in addition to standard gluing procedure the outsole is also stitched resulting in a greater flexibility and durability of the shoe.

#### **TWICE SECURED**

The outsole is really something that you have never seen before. It is made by combining Phylon rubber + TPU (thermoplastic PU) + Natural rubber which make the outsole light, soft, flexible, comfortable and durable. Silicone part of the heel ensures a 100% return of the outsole to its original shape after jump. The shoe is designed to be equally good on absolutely every playing surface. A specially designed outsole with small anti-sliding studs, which on artificial grass along with other ingeniously designed outsole parts give results identical to shoes with large spikes. On parquet floor, concrete or other hard surfaces they do not inconvenience the player but give an even more explosive start and the added advantage as well as stability. Simply, these are the first crampons for parquet, concrete and other hard surfaces which give the player an actual advantage when running from a standstill.

Revolutionary Memoris anatomical insole is made of memory foam and supporting material with a reversible effect so that Memory foam follows the foot in motion, in this way affecting the proper distribution of the load pressure, stability and position of the foot. In this manner it protects the foot, ankles, knees and back and at the same time it provides for the necessary softness, flexibility and incredible comfort.

Arch support: it provides for the support of the foot arch and relieves the support points, and at the same time it adds to better shock absorption and surface pressure reduction. In this way it reduces 20% of body weight during the game.

The insole board beneath the insole is processed with the California system from a special impregnated fabric and prevents the outsole deformation and fraying.

The front area of the upper part of the insole has a slightly grainy texture and prevents slipping, while the backside has a ribbed surface which eliminates any possibility of slipping of the insole inside the shoe.

#### **M2003 MAGIC**

Available color combinations:



026 black yellow



130 red royal



**THIS IS A UNIQUE SHOE, "LOW TO THE GROUND", WITH A WEAR-RESISTANT OUTSOLE, ANTI-SKID SYSTEM AND YET COMFORTABLE. ALL THIS THANKS TO THE REVOLUTIONARY INSOLE MADE OF MEMORY FOAM AND SPECIAL SILICONE PROTECTION ADDED UNDER THE INSOLE WHICH PROTECTS BUT ALSO INCREASES THE COMFORT OF THE SHOES.**

The upper part consists of several different materials: Garment PU (exclusive material for futsal shoes), Cow suede and Mesh that combined together make a really solid fitting shoe at the same time providing an excellent feel for the ball. A specially designed combination of materials ensures perfect ball control.

The tongue is fully mesh padded on the inside which ensures an excellent feel for the ball.

Two additional reinforcements made from a high-quality rubber which strengthen the front part of the shoe most often exposed to ball impact and improve the kick itself.

#### UPPER

#### MESH PADDED TONGUE

#### FRONT PART REINFORCEMENTS

Heel counter: a special material maintains the shape, improves stability and protects the heel.

#### HEEL COUNTER

Resistant rubber protection that strengthens and protects against wear the most important last shoelace hole for tightening the shoelace.

#### RUBBER PROTECTION

Special reinforcement made from special durable cow suede added to increase the durability of the shoe on the medial side (arch side) usually exposed to the abrasion in movements of sliding.

#### COW SUEDE PROTECTION

The shoe is twice secured in the front area, in addition to standard gluing procedure the outsole is also stitched resulting in a greater flexibility and durability of the shoe.

#### TWICE SECURED

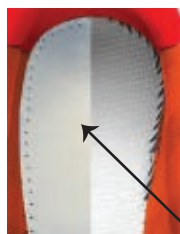
Wear-resistant outsole made of natural rubber which makes it soft and resilient but also enhanced with special additives for durability. Wear-resistant rubber is of the following composition: natural rubber + butadiene rubber + styrene butadiene rubber.



Revolutionary Memoris anatomical insole is made of memory foam and supporting material with a reversible effect so that Memory foam follows the foot in motion, in this way affecting the proper distribution of the load pressure, stability and position of the foot. In this manner it protects the foot, ankles, knees and back and at the same time it provides for the necessary softness, flexibility and incredible comfort.



This is a unique outsole which gives the feeling of no outsole at all, it is "low to the ground", and yet wear-resistant and specially designed with many "grip points" to prevent slipping.



The insole board beneath the insole is twice processed with the California system; made from a special impregnated fabric upgraded with an additional silicon-based protection layer. These features and improvements eliminate any deformation of the outsole and at the same time make the shoe even more comfortable.

Arch support: it provides for the support of the foot arch and relieves the support points, and at the same time it adds to better shock absorption and surface pressure reduction. In this way it reduces 20% of body weight during the game.

The front area of the upper part of the insole has a slightly grainy texture and prevents slipping, while the backside has a ribbed surface which eliminates any possibility of slipping of the insole inside the shoe.

#### M2203 FORCE

Available color combinations:



130 red orange



286 royal white



074 turquoise black



**IF YOU SEE FUTSAL AS A CONTACT GAME WITH FAST DIRECTION CHANGING, FAST PASSES AND KICKS AND YOU EXPECT YOUR SHOES TO BE STABLE, SOLID, SAFE AND COMFORTABLE, THIS IS THE RIGHT SHOE FOR YOU. IF YOU ALSO PLAY ON DIFFERENT TYPES OF SURFACES, YOUR QUEST FOR THE RIGHT SHOE SHOULD END HERE.**

The upper is made from a combination of special types of the highest quality Synthetic leather (PU), Nylon and Mesh while the inside is lined with a padded material which makes it more breathable and very comfortable. The materials are highly resistant to any external impacts, tearing and wearing at the same time providing a great comfort and softness. It comes with a texture for a better grip and ball control.

#### UPPER

Heel counter: a special material maintains the shape, improves stability and protects the heel.

#### HEEL COUNTER

The central lacing system and padded mesh tongue allow a nice and secure fit, while maintaining a feeling of comfort.

#### MESH PADDED TONGUE

Two additional reinforcements made from a high-quality rubber which strengthen the front part of the shoe most often exposed to ball impact and improve the kick itself.

#### FRONT PART REINFORCEMENTS

Outsole is completely glued and sewn providing more flexibility and durability.

#### TWICE SECURED

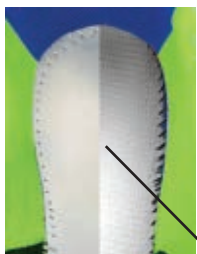
Toe cap: a special material in the toe of the upper around the toes forms a so-called cap around the toes, maintains the shape of the shoe, protects the toes and improves durability of this part. The shot using this part of the upper is much stronger, the ball is faster while the energy behind the shot remains unchanged.

#### TOE CAP

Dominante outsole provides phenomenal traction on any flat playing surface. Wear-resistant outsole is made of natural rubber which makes it soft and resilient but also enhanced with special additives for durability. Wear-resistant rubber is of the following composition: natural rubber + butadiene rubber + styrene butadiene rubber. The EVA foam of the outsole has dual density which enables the 100% outsole return after jump while maintaining a low profile.



Revolutionary Memoris anatomical insole is made of memory foam and supporting material with a reversible effect so that Memory foam follows the foot in motion, in this way affecting the proper distribution of the load pressure, stability and position of the foot. In this manner it protects the foot, ankles, knees and back and at the same time it provides for the necessary softness, flexibility and incredible comfort.



The insole board beneath the insole is twice processed with the California system; made from a special impregnated fabric upgraded with an additional silicon-based protection layer. These features and improvements eliminate any deformation of the outsole and at the same time make the shoe even more comfortable.

Arch support: it provides for the support of the foot arch and relieves the support points, and at the same time it adds to better shock absorption and surface pressure reduction. In this way it reduces 20% of body weight during the game.

The front area of the upper part of the insole has a slightly grainy texture and prevents slipping, while the backside has a ribbed surface which eliminates any possibility of slipping of the insole inside the shoe.

#### M2002 DOMINATE

Available color combinations:



286 royal lime



006 white navy blue



**THIS MODEL IS SO FLEXIBLE YOU CAN ACTUALLY PUT IT IN YOUR POCKET. NOT ONLY IS THE DURABILITY OF THE SHOE ENHANCED BY ADDING A SPECIAL LEATHER PROTECTION TO THE AREA WHERE THE SHOE SUFFERS THE MOST DAMAGE, BUT ALSO THE DETAILED RESEARCH AND DEVELOPMENT OF THE SHOE RESULTED IN ADDING A PROTECTION TO THE SHOELACE HOLE FOR TIGHTENING THE SHOELACE. REVOLUTIONARY INSOLE ELIMINATES 20% OF BODY WEIGHT, INCREASES COMFORT AND HELPS PROTECT YOUR HEALTH.**

The upper consists of four different materials: Garment PU (exclusive material for futsal shoes), Hiking (the lightest and the most durable material), Cow suede and Mesh. That combined together make an upper highly resistant to any external impacts, tearing and wearing while providing a great comfort and softness to the foot. This combination of materials and shape of the shoe ensure perfect ball control.

#### UPPER

Heel counter: a special material maintains the shape, improves stability and protects the heel.

#### HEEL COUNTER

Resistant rubber protection that strengthens and protects against wear the most important last shoelace hole for tightening the shoelace.

#### RUBBER PROTECTION

Special reinforcement made from special durable cow suede added to increase the durability of the shoe on the medial side (arch side) usually exposed to the abrasion in movements of sliding.

#### COW SUEDE PROTECTION

The tongue is fully mesh padded on the inside which ensures an excellent feel for the ball.

#### MESH PADDED TONGUE

Two additional reinforcements made from a high-quality rubber which strengthen the front part of the shoe most often exposed to ball impact and improve the kick itself.

#### FRONT PART REINFORCEMENTS

The shoe is twice secured in the front area, in addition to standard gluing procedure the outsole is also stitched resulting in a greater flexibility and durability of the shoe.

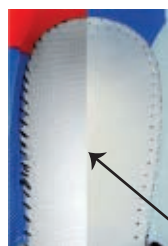
#### TWICE SECURED

K-flex system is the flexible part of the outsole with a pattern designed to maximize the flexibility of the shoe and increase its durability; it grants extra speed and better utilization of the energy used for jumping as well.



Rotation: allows for rotation under body weight.

Outsole provides phenomenal traction on any flat playing surface. Wear-resistant outsole made of natural rubber which makes it soft and resilient but enhanced with special additives for durability. Wear-resistant rubber is of the following composition: natural rubber + butadiene rubber + styrene butadiene rubber.



The insole board beneath the insole is twice processed with the California system; made from a special impregnated fabric upgraded with an additional silicon-based protection layer. These features and improvements eliminate any deformation of the outsole and at the same time make the shoe even more comfortable.

Revolutionary Memoris anatomical insole is made of memory foam and supporting material with a reversible effect so that Memory foam follows the foot in motion, in this way affecting the proper distribution of the load pressure, stability and position of the foot. In this manner it protects the foot, ankles, knees and back and at the same time it provides for the necessary softness, flexibility and incredible comfort.



Arch support: it provides for the support of the foot arch and relieves the support points, and at the same time it adds to better shock absorption and surface pressure reduction. In this way it reduces 20% of body weight during the game.

The front area of the upper part of the insole has a slightly grainy texture and prevents slipping, while the backside has a ribbed surface which eliminates any possibility of slipping of the insole inside the shoe.

#### M2202 WINNER

Available color combinations:



021 orange navy blue



286 royal red



**IF YOU ARE LOOKING FOR THE LIGHTEST FUTSAL SHOES MADE OF DURABLE AND COMFORTABLE MATERIALS, THIS IS THE RIGHT MODEL FOR YOU. IT WILL ALWAYS REMAIN OUR LIGHTEST MODEL THAT CELEBRATED OUR UPCOMING BRAND. TESTED AND DURABLE, COMFORTABLE, PLIABLE AND SIMPLY REMARKABLE.**

With this model there are two types of upper material and therefore it is offered under two different codes. The upper of model M2000 consists of a combination of Garment PU (exclusive material for futsal shoes) and Mesh while the upper of model M2001 consists of a combination of Hiking material (the lightest and the most durable material) and Mesh. In both models, the right combination of materials makes the upper highly resistant to any external impacts, tearing and wearing and ensures perfect ball control while providing a great comfort and softness to the foot.

#### UPPER

The tongue is fully mesh padded on the inside which ensures an excellent feel for the ball.

#### MESH PADDED TONGUE

Heel counter: a special material maintains the shape, improves stability and protects the heel.

#### HEEL COUNTER

Two additional reinforcements made from a high-quality rubber which strengthen the front part of the shoe most often exposed to ball impact and improve the kick itself.

#### FRONT PART REINFORCEMENTS

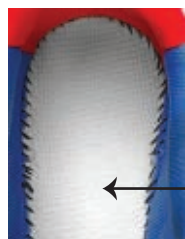
The shoe is twice secured in the front area, in addition to standard gluing procedure the outsole is also stitched resulting in a greater flexibility and durability of the shoe.

#### TWICE SECURED

K-flex system: flexible ribbed system that gives extra speed, better use of explosive power and protection from potential injuries.

Rotation: one of the most important parts of the shoe is the part that allows rotation under body weight.

The front area of the upper part of the insole has a slightly grainy texture and prevents slipping.



The insole board beneath the insole is processed with the California system from a special impregnated fabric and prevents the outsole deformation and fraying.

The bottom side makes insole sliding impossible when wearing the shoes; the outsole and the front part of the shoe are reinforced with a spongy layer under the toes in order to maximize comfort when playing.

#### M2000 MASTER INDOOR

Available color combinations:



006 white

#### M2001 THE FIRST INDOOR

Available color combinations:



130 red



286 blue



107 navy blue



**IF YOU ARE LOOKING FOR SHOES FOR ARTIFICIAL GRASS, AS PLIABLE AND COMFORTABLE AS THE SHOES SPECIALLY MADE FOR PARQUET, THIS IS THE RIGHT MODEL FOR YOU. TESTED FOR COMFORT AND DURABILITY. THE ONLY MODEL WE NEVER NEEDED TO IMPROVE.**

With this model there are two types of upper material and therefore it is offered under two different codes. The upper of model M2200 consists of a combination of Garment PU (exclusive material for futsal shoes) and Mesh while the upper of model M2201 consists of a combination of Hiking material (the lightest and the most durable material) and Mesh. In both models, the right combination of materials makes the upper highly resistant to any external impacts, tearing and wearing and ensures perfect ball control while providing a great comfort and softness to the foot.

**UPPER**

The tongue is fully mesh padded on the inside which ensures an excellent feel for the ball.

**MESH PADDED TONGUE**

Heel counter: a special material maintains the shape, improves stability and protects the heel.

**HEEL COUNTER**

The shoe is twice secured in the front area, in addition to standard gluing procedure the outsole is also stitched resulting in a greater flexibility and durability of the shoe.

**TWICE SECURED**

Two additional reinforcements made from a high-quality rubber which strengthen the front part of the shoe most often exposed to ball impact and improve the kick itself.

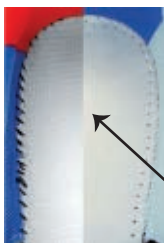
**FRONT PART REINFORCEMENTS**

Multi-stud rubber outsole with high resistant surface; firm and flexible at the same time, comfortable and long lasting.



Rotation: one of the most important parts of the shoe is the part that allows rotation under body weight. This is the only shoe for artificial grass having this feature on the market.

Bottom part under the heel is protected with added silicone part keeping your heel safe, protecting the shoe from fraying and giving perfect comfort at the same time. This insole is our patent, which creation is based on appreciation of professional players experiences and wishes and this makes the shoe unique on the market.



The insole board beneath the insole is twice processed with the California system; made from a special impregnated fabric upgraded with an additional silicon-based protection layer. These features and improvements eliminate any deformation of the outsole and at the same time make the shoe even more comfortable.

The front area of the upper part of the insole has a slightly grainy texture and prevents slipping, while the backside has a ribbed surface which eliminates any possibility of slipping of the insole inside the shoe.

**M2200 MASTER TURF**

Available color combinations:



006 white

**M2201 THE FIRST TURF**

Available color combinations:



107 navy blue



# Memoris

## HAND STITCHED BALLS

### INTERNALLY CLOSED SEAMS

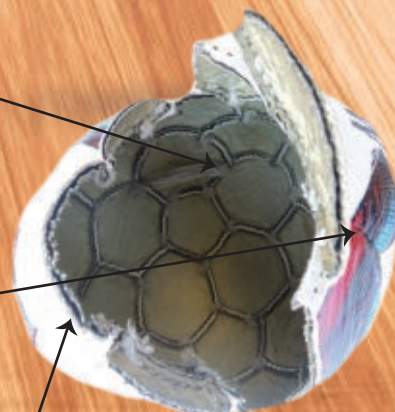
Internal closing of the seams is innovative technology in hand stitching which makes the balls several times more durable, reliable and softer than standard way of ball production.

### SPECIAL ADHESIVE COATING

The seams of all Memoris balls have a special adhesive coating which reduces water uptake to a level significantly lower than that prescribed by FIFA standards and also protects the seams from dust, mud etc.

### MEMORY FOAM

In the process of production of some of Memoris balls we combine a cover and inner layer of memory foam resulting in a ball of perfect performance, with more predictable and balanced trajectory and better memory rebound.





**M1127 MASTER + FOOTBALL BALL**

Available to 2018

- Details:** Premium match ball. This durable football is made according to FIFA A standards. It is made of high-end materials to ensure top performance. Cover is embossed with a protuberant structure. Hand-stitched with internally closed seams, special adhesive coating and added memory foam between cover and bladder for more predictable and balanced trajectory, better touch and better memory rebound. This ball has the thickest cover and represents a combination of endurance and perfect performance in the game.
- Material:** High-end cover material: Hexature Grain "HIGH ABBRATION" Microfiber PU (1.8mm) Cordley, Japan; 4 backing layers; Sewing thread: Polyester cord (5-Ply twisted); Added memory foam; Latex bladder
- Size:** 5 (68.5cm - 69cm)
- Weight:** 430gr - 437gr

**M1116 MASTER FOOTBALL BALL**

- Details:** Premium match ball. This durable football is made according to FIFA A standards. It is made of high-end materials to ensure top performance. Cover is embossed with a protuberant structure. Hand-stitched with internally closed seams, special adhesive coating and added memory foam between cover and bladder for more predictable and balanced trajectory, better touch and better memory rebound. This ball has the thickest cover and represents a combination of endurance and perfect performance in the game.
- Material:** Cover material: Pebble super grip "HIGH ABBRATION" Microfiber PU (1.8mm) Cordley, Japan; 4 backing layers; Sewing thread: Polyester cord (5-Ply twisted); Added memory foam; Latex bladder
- Size:** 5 (68.8cm - 69cm)
- Weight:** 428gr - 435gr

**M1118 MAGIC FOOTBALL BALL**

- Details:** Premium match ball. High-level matches deserve a football ball that responds with accuracy and a soft touch. Cover is embossed with an elliptical structure. Hand-stitched with internally closed seams, special adhesive coating and added memory foam between cover and bladder for more predictable and balanced trajectory, better touch and better memory rebound. This ball proved to be one of the best in all tests: it is durable, resistant, precise and reliable so we recommend it to everyone.
- Material:** Cover material: Techno Microfiber PU (1.3mm) Duksung, Korean; 5 backing layers; Sewing thread: Polyester cord (5-Ply twisted); Added memory foam; Latex bladder
- Size:** 5 (68.5cm - 69cm)
- Weight:** 425gr - 430gr

**M1109 FREE KICK FOOTBALL BALL**

- Details:** Premium match ball. Hand-stitched with internally closed seams and special adhesive coating. Cover is embossed with a star structure which proved to be one of the best in all tests. This is where we reached the best ratio between quality and price.
- Material:** Cover material: PU (1.2mm); 5 backing layer; Sewing thread: 100% PES (6-Ply twisted); Latex bladder
- Size:** 5 (68.5cm - 68.8cm)
- Weight:** 425gr - 433gr





### M1119 DOMINATE FOOTBALL BALL

- Details:** Match ball. Hand-stitched with internally closed seams and special adhesive coating. This ball is specially reinforced with PVC protection and performs perfectly in the game.
- Material:** Cover material: PU (1.5mm) Denisty, Korean; 4 backing layers; Sewing thread: 100% PES (6-Ply twisted); Butyl valve latex bladder; Shine finish
- Size:** 5 (68.8cm - 69cm)
- Weight:** 430gr - 440gr



### M1120 WINNER FOOTBALL BALL

- Details:** Match ball. Hand-stitched with internally closed seams and special adhesive coating. The ball is made of a material that is best demonstrated with the old models of balls and performs perfectly in the game.
- Material:** Cover material: PU (1.5mm) Duksung, Korean; 4 backing layers; Sewing thread: 100 % PES (6-Ply twisted); Butyl valve latex bladder; Matt finish
- Size:** 5 (68.5cm - 69.3cm)
- Weight:** 429gr - 435gr



### M1121 RESPECT FOOTBALL BALL

- Details:** Match ball. Hand-stitched with internally closed seams and special adhesive coating. Cover is embossed with an elliptical structure. The ball is replica of the Magic ball. We recommend this ball as your training ball if you choose Magic ball as your match ball.
- Material:** Cover material: Techno Microfiber base PU (1.3mm) Denisty, Korean; 4 backing layers; Sewing thread: 100% PES (6-Ply twisted); Butyl valve latex bladder
- Size:** 5 (68.5cm - 69.1cm)
- Weight:** 430gr - 438gr



### M1124 FORCE FOOTBALL BALL

- Details:** Premium match ball. Hand-stitched with internally closed seams and special adhesive coating. Cover is embossed with a star structure and the material showed top testing results. Considering the price and the quality, this ball makes an excellent offer.
- Material:** Cover material: AR 211 base PU (1.2mm) Duksung, Korean; 5 backing layers; Sewing thread: Polyester cord (5-Ply twisted); Latex bladder
- Size:** 5 (68.5cm - 69.3cm)
- Weight:** 428gr - 435gr





### M1183 DRIBBLER + FOOTBALL BALL

- Details:** This is a match ball for younger generation who use a ball size 5 and weight of ball size 4 in the competition. This durable ball is hand-stitched with internally closed seams and special adhesive coating.
- Material:** Cover material: Turbo PU (1.2mm) Turbo, Korean; 4 backing layers; Sewing thread: 100% PES (6-Ply twisted); Butyl valve latex bladder; Shine finish
- Size:** 5 (68cm - 68.8cm)
- Weight:** 380gr - 385gr



### M1185 MY FIRST BALL FOOTBALL BALL Available to 2018

- Details:** This is a match ball for younger generation who use a ball size 5 and weight of ball size 4 in the competition. This durable ball is hand-stitched with internally closed seams and special adhesive coating.
- Material:** Cover material: APU 1100 (1.1mm) 100% PU, Pakistan; 5 backing layers; Sewing thread: 100% PES (6-Ply twisted); Latex bladder; Shine finish
- Size:** 5 (68cm - 69cm)
- Weight:** 380gr - 390gr



### M1180 DRIBBLER FOOTBALL BALL

- Details:** Match ball. This durable ball is hand-stitched with internally closed seams and special adhesive coating. Reliable performance match ball for the youngest generations.
- Material:** Cover material: Turbo PU (1.2mm) Turbo, Korean; 4 backing layers; Sewing thread: 100% PES (6-Ply twisted); Butyl valve latex bladder; Shine finish
- Size:** 4 (64cm - 64.4cm)
- Weight:** 369gr - 379gr



### M1184 MY FIRST BALL FOOTBALL BALL Available to 2018

- Details:** Match ball. This durable ball is hand-stitched with internally closed seams and special adhesive coating. Reliable performance match ball for the youngest generations.
- Material:** Cover material: APU 1100 (1.1mm) 100% PU, Pakistan; 5 backing layers; Sewing thread: 100% PES (6-Ply twisted); Latex bladder; Shine finish
- Size:** 4 (64cm - 64.4cm)
- Weight:** 370gr - 380gr





**Details:** Premium match ball. This durable football is made according to FIFA A standards. It is made of high-end materials to ensure top performance. Cover is embossed with a protuberant structure. Hand-stitched with internally closed seams, special adhesive coating and added memory foam between cover and bladder for more predictable and balanced trajectory, better touch and better memory rebound. This ball has the thickest cover and represents a combination of endurance and perfect performance in the game.

**Material:** High-end cover material: Hexature Grain "HIGH ABBRATION" Microfiber PU (1.8mm) Cordley, Japan; 4 backing layers; Sewing thread: Polyester cord (5-Ply twisted); Added memory foam; Stuffed butyl bladder

**Size:** 62.5cm - 63cm

**Weight:** 425gr - 430gr

**M1216 MASTER FUTSAL BALL**

**Details:** Premium match ball. This durable futsal ball is hand-stitched and features high-end materials with internally closed seams and special adhesive coating to ensure top performance. High-level matches deserve a futsal ball that responds better during fast playing, has predictable and balanced trajectory, better touch and lower water uptake. Cover is embossed with an elliptical structure. This ball is our best offer and we recommend it to anyone and for all surfaces.

**Material:** Cover material: Techno Microfiber base PU (1.3mm) Duksung, Korean; 4 backing layers; Sewing thread: Polyester cord (5-Ply twisted); Stuffed butyl bladder

**Size:** 62.7cm - 63cm

**Weight:** 415gr - 430gr

**M1223 MASTER + FUTSAL BALL**

**Details:** Premium match ball. Hand-stitched with internally closed seams and special adhesive coating. The cover is embossed with an elliptical structure. This is an improved version of Master ball. To enhance the already excellent performance characteristics, we had added memory foam between cover and bladder. This is one of our best futsal balls. It is durable, reliable, fast, precise and ideal for all types of surfaces.

**Material:** Cover material: Techno Microfiber base PU (1.3mm) Duksung, Korean; 4 backing layers; Sewing thread: Polyester cord (5-Ply twisted); Added memory foam; Stuffed butyl bladder

**Size:** 62.5cm - 63.3cm

**Weight:** 421gr - 425gr





### M1217 THE FIRST FUTSAL - BALL

- Details:** Premium match ball. Hand-stitched with internally closed seams and special adhesive coating. The ball is good for all surfaces and performs perfectly in the game. This ball is specially reinforced with PVC protection and because of that it is perfect for playing on the parquet. It is crafted from thicker material which makes it more durable and more precise in passing the ball and kicking.
- Material:** Cover material: CPU PU (1.2mm) Duksung, Korean; 4 backing layers; Sewing thread: Polyester cord (5-Ply twisted); Stuffed butyl bladder; Shine finish
- Size:** 62.8cm - 63cm
- Weight:** 420gr - 430gr



### M1220 DOMINATE FUTSAL BALL

- Details:** Match ball. Hand-stitched with internally closed seams and special adhesive coating. Cover is embossed with a star structure. This ball proved to be one of the best in all tests.
- Material:** Cover material: Dura PU (1.3mm) Denisty, Korean; 4 backing layers; Sewing thread: 100% PES (6-Ply twisted); Butyl bladder
- Size:** 62.7cm - 63.2cm
- Weight:** 415gr - 425gr



### M1218 WINNER FUTSAL BALL

- Details:** Match ball. Cover is embossed with an elliptical structure. Hand-stitched with internally closed seams and special adhesive coating. With attested material and new production we made a perfect ball for concrete.
- Material:** Cover material: PU (1.5mm) Taiwan; 4 backing layers; Sewing thread: 100% PES (6-Ply twisted); Butyl bladder; Matt finish
- Size:** 62.3cm - 62.5cm)
- Weight:** 410gr - 420gr





# HYBRID BALLS

Hybrid ball is the result of combining hand stitching, machine stitching and gluing. This is revolutionary way of ball production, with the advantage of the ball being several times more durable, softer and lighter than the existing models. Due to their similar appearance, the hybrid ball is often mixed up with thermally bonded balls, but the latter are nothing more than balls glued under high temperatures, significantly less durable than hybrid balls. In addition to the hybrid football ball, we take pride in the fact that we produced the first hybrid futsal ball.



## M1123 FUTURE FOOTBALL BALL

**Details:** Premium match ball. This hybrid ball represents an ideal combination of strength, softness and durability. The production process combining the embossed PU cover and an inner layer of memory foam resulted in a ball of perfect performance on all types of surfaces. The special adhesive coating applied on the seams protects the ball from dust and reduces the water uptake to a level significantly lower than that prescribed by FIFA standards. This ball is ideal for all levels of competition and all ages.

**Material:** Cover material: AR 211 base PU (1.2mm) Duksung, Korean; 4 backing layers; Sewing thread: Polyester cord (5-Ply twisted); Added memory foam; Rewind sy bladder

**Size:** 5 (68.5cm-68.7cm)

**Weight:** 422gr - 428gr



## M1222 FUTURE FUTSAL BALL

**Details:** Premium match ball. This hybrid futsal ball represents an ideal combination of strength, softness and durability. The production process combining the embossed PU cover and an inner layer of memory foam resulted in a ball of perfect performance on all types of surfaces. The special adhesive coating applied on the seams protects the ball from dust. This ball is ideal for all levels of competition, all ages and all surfaces.

**Material:** Cover material: AR 211 base PU (1.2mm) Duksung, Korean; 4 backing layers; Sewing thread: Polyester cord (5-Ply twisted); Added memory foam; Rewind butyl stuffed bladder

**Size:** 63.2cm-63.3cm

**Weight:** 430gr









### M1300 SOCCER SET - JERSEY SHORT SLEEVE/SHORTS

Material: Micro 100% Polyester, Interlock gsm 120-135 grms  
Details: Specially created fabric: light, comfortable, ultra-thin and easy maintaining; Quick dry; Breathable and light; Regular fit  
Sizes: JR: 6 - 8 - 10 - 12 - 14  
SR: S - M - L - XL - XXL



187 grey black



006 white gold



289 navy blue white



294 yellow navy blue



130 red white



286 royal white



106 violet white



021 orange white

### MA103 SOCCER SOCKS

Materials: 95% Polyester/5% Spandex;  
Mesh parts placed on the ankle, calf and foot;  
Details: Breathable and light  
Sizes: S (31-34) - M (35-38) - L (39-42) - XL (43-46)



061 white



286 blue



021 orange



289 navy blue



115 yellow



186 red



026 black

**M1305 SOCCER SET - JERSEY LONG SLEEVE/SHORTS**

Material: Micro 100% Polyester, Interlock gsm 120-135 grms  
 Details: Specially created fabric: light, comfortable, ultra-thin and easy maintaining; Quick dry; Breathable and light; Regular fit  
 Sizes: JR: 6 - 8 - 10 - 12 - 14  
 SR: S - M - L - XL - XXL



187 grey black



006 white gold



289 navy blue white



294 yellow navy blue



130 red white



286 royal white



106 violet white



021 orange white

**M1310 SOCCER SET - JERSEY SHORT SLEEVE/SHORTS**

Material: Micro 100% Polyester, Interlock gsm 120-135 grms  
 Details: Specially created fabric: light, comfortable, ultra-thin and easy maintaining; Quick dry; Breathable and light; Regular fit  
 Sizes: JR: 8 - 10 - 12 - 14  
 SR: S - M - L - XL - XXL



286 blue red



021 orange white



294 yellow navy blue



130 red blue



092 green white



074 light blue white



006 white orange



**MA104 TRAINING VEST - Senior****MA105/MA106 TRAINIG VEST - Junior**

Materials: 100% Polyester gsm 90 grms  
Details: Quick dry and keeps comfortable;  
Breathable and light  
Sizes: JR: 10 - 12  
SR: universal size (M-XXL)



186 red



021 orange



115 yellow



286 royal

**MA107 REVERSIBLE TRAINING VEST - Senior****MA108 REVERSIBLE TRAINING VEST - Junior**

Materials: 100% Polyester gsm 90 grms  
Details: Quick dry and keeps comfortable;  
Breathable and light  
Sizes: JR: universal size (8-12)  
SR: universal size (M-XXL)



227 blue orange



385 red yellow

**MA107A CAPTAIN'S BRACELET - Senior****MA108A CAPTAIN'S BRACELET - Junior**

006 white



286 royal



026 black



186 red

Materials: Micro 100% Polyester, Interlock  
gsm 120-135 grms  
Sizes: JR: universal size  
SR: universal size

### M1302 GOALKEEPER'S JERSEY - LONG SLEEVES



021 black orange

026 black yellow

- Materials:** 100% Polyester, Interlock gsm 190-210 grms
- Details:** Breathable fabric; Allows ventilation of the skin; Specially created fabric: comfortable, light, ultra-thin, fast-drying and easy maintaing; Strategically reinforced by placing the high quality sponge in key areas-on the positions which protects both-upper arm and forearm
- Sizes:** JR: 6 - 8 - 10 - 12 - 14  
SR: S - M - L - XL - XXL

### M1301 GOALKEEPER'S JERSEY - SHORT SLEEVES



021 black orange

026 black yellow

- Materials:** 100% Polyester, Interlock gsm 190-210 grms
- Details:** Breathable fabric; Allows ventilation of the skin; Specially created fabric: comfortable, light, ultra-thin, fast-drying and easy maintaing
- Sizes:** JR: 6 - 8 - 10 - 12 - 14  
SR: S - M - L - XL - XXL

### M1303 GOALKEEPER'S SHORTS



021 black orange

026 black yellow

- Materials:** 100% Polyester, Interlock gsm 245-260 grms
- Details:** Breathable fabric; Allows ventilation of the skin; Specially created fabric: comfortable, light, ultra-thin, fast-drying and easy maintaing; Strategically reinforced by placing the high quality sponge on the positions which protects hips
- Sizes:** JR: 6 - 8 - 10 - 12 - 14  
SR: S - M - L - XL - XXL

### M1304 GOALKEEPER'S PANTS



021 black orange

026 black yellow

- Materials:** 100% Polyester, Interlock gsm 245-260 grms
- Details:** Breathable fabric; Allows ventilation of the skin; Specially created fabric: comfortable, light, ultra-thin, fast-drying and easy maintaing; Strategically reinforced by placing the high quality sponge along the surface
- Sizes:** JR: 6 - 8 - 10 - 12 - 14  
SR: S - M - L - XL - XXL



**M1400 TRACKSUITS**

265 navy blue white

187 black grey

Materials: 100% Polyester, Trickot gsm  
215-235 grms

Details: Durable, resistant and comfortable fabric  
Narrow legs with zippers; Regular fit

Sizes: JR: 6 - 8 - 10 - 12 - 14  
SR: S - M - L - XL - XXL

**M1401 TRAINING TRACKSUIT**

026 black

Materials: 100% Polyester, Dhel speedo  
Details: Elastic sleeves cuffs and a zipper on the bottom of the pants;  
Regular fit

Sizes: JR: 6 - 8 - 10 - 12 - 14  
SR: S - M - L - XL - XXL

**M1402 WINDBREAKER**

026 black

Materials: 100% Polyester, Parachute  
Details: Durable, resistant and comfortable fabric;  
Storm hood packed in the collar;  
Elastic sleeves cuffs and a zipper on the bottom of the pants;  
Regular fit

Sizes: JR: 6 - 8 - 10 - 12 - 14  
SR: S - M - L - XL - XX

**M1306 POLO T-SHIRT**

265 navy blue white

061 white grey

Materials: 100% Polyester, Interlock gsm  
130-140 grms  
Details: Soft and breathable fabric; Regular fit

Sizes: JR: 12 - 14  
SR: S - M - L - XL - XXL



289 navy blue white

187 black grey

Materials: 100% Polyester, Interlock gsm  
190-210 grms  
Details: Soft and breathable fabric; Regular fit  
Sizes: JR: 12 - 14  
SR: S - M - L - XL - XXL

**M1307 SWEATSHIRT****M1308 3/4 PANTS FOR TRAINING**

107 navy blue

026 black

Materials: 100% Polyester, Interlock gsm  
190-210 grms  
Details: Perfect fit and breathable comfort  
Sizes: JR: 12 - 14  
SR: S - M - L - XL - XXL

**M1309 WINTER JACKET**

026 black

Materials: 100% Polyester, Parachute  
Details: High quality, waterproof fabric;  
Stuffed with a special material; Extremely warm, comfortable and light; Storm hood packet in the collar;  
Elastic sleeves cuffs;  
Modern fit  
Sizes: JR: 12 - 14  
SR: S - M - L - XL - XXL

### M1001 BACKPACK



265 navy blue      026 black red      187 black grey

**Material:** High quality and water-resistant main fabric  
**Details:** Zip main compartment; Opening for headphones; Hidden zip valuables pocket; Ergonomic shoulder straps lined with mesh padded grip for comfort; Laminated base for durability  
**Size:** 30x13.5x43.5cm

### M1005 SPORTS BACKPACK



186 red      026 black      286 blue

**Material:** High quality and water-resistant main fabric  
**Details:** Zip main compartment; Two side pocket for shoes; Zip mesh pocket on front; Hidden pocket for valuables; Adjustable shoulder straps with cushioning system; Carry handles  
**Size:** 44x35x48cm

### M1003 SPORTS BAG



265 navy blue      187 black grey

**Material:** High quality and durable main fabric  
**Details:** Zip main compartment; Inside zip valuables pocket; Inside converted collapsible pocket for shoes; Adjustable shoulder straps with cushioning system; Dual carry handles for a higher level of comfort and easy transport; Special metal reinforcements on the most burdened parts  
**Size:** 50x35x50cm

### M1004 TRAVELING BAG



187 black grey

**Material:** High quality and durable main fabric  
**Details:** Zip main compartment; Inside zip valuables pocket; Adjustable shoulder straps with cushioning system; Dual carry handles; Dual carry handles for a higher level of comfort and easy transport; Special metal reinforcements on the most burdened parts  
**Size:** 69x30x28cm

### M1000 BAG FOR BALLS



026 black

**Material:** Water-resistant and high quality fabric  
**Details:** Circuit shutter keeps the bag closed; Adjustable shoulder straps with cushioning system; Dual carry handles for more comfortable and easy transport; It carries 12 to 15 balls

### MA102 NET FOR BALLS



**Material:** High quality polyester  
**Details:** It carries 12 to 15 balls



**MEMORIS HEADQUARTERS**

Koce Kapetana 86  
18000 Nis  
Serbia

P +381 18 571870

M+ 381 63 441724

e-mail: [memoris@memoris.rs](mailto:memoris@memoris.rs)  
[nebojsa@monopol.rs](mailto:nebojsa@monopol.rs)

MONOPOL Ltd.

International trademark protection

No 1316884

[www.memoris.rs](http://www.memoris.rs)



**Memoris®**

**QUALITY & PRICE**